



# FURAHIA

SOLUTIONS

## COVID-19 RETURN TO WORK SOLUTIONS

### ABOUT US

Furaha Solutions is a progressive, proudly South African 100% Black Woman owned, organization dedicated to delivering holistic end to end HR and healthcare Solutions. In partnership with Workforce Holdings Limited Group, we are uniquely positioned to offer South Africa a range of critical and essential healthcare and staffing solutions that will help combat the spread of the corona virus pandemic in South Africa.

Coronaviruses are a large family of viruses which may cause respiratory infections ranging from the common cold to more severe diseases such as Middle East Respiratory Syndrome (MERS) and Severe Acute Respiratory Syndrome (SARS). The most recent Coronavirus disease is COVID-19. On 11 March 2020 the World Health Organization (WHO) declared COVID-19 as a global pandemic and on 15 March 2020, President Cyril Ramaphosa in South Africa declared a national state of disaster with a partial travel ban, travel advisories, discouraging public transport, the closing of schools, and prohibiting gatherings of more than 100 people. To date there are more than 2500 confirmed cases of the virus in South Africa (April 16, 2020). With the necessary public, private and civil society interventions and collaborations, South Africa can curb the spread of COVID-19 and flatten the infection curve. Furaha Solutions and its partners are dedicated to contributing towards the global fight against COVID-19 by offering essential healthcare relief services that can be deployed nationally.

# Essential COVID-19 Return to Work Solutions



## Employee 'back to work' Medical Screening

We are able to dispatch trained medical professionals or mobile clinic units that allow us to conduct medical screening examinations on site, without the associated costs of receiving permanent association with a fixed onsite clinic. We give your employees a health clearance certificate and identify them as low-risk COVID-19 carriers in the workplace. Those who show symptoms associated with COVID-19, will be referred for further medical investigation. Our trained healthcare professionals come to the desired premises to conduct occupational health services in line with the current COVID-19 workplace protocols. Our units are expertly equipped with all manner of equipment, from medical apparatus or x-rays and lung function tests, audio booths to blood pressure and cholesterol testing. Our healthcare workers will also undertake temperature readings (as a COVID-19 screening measure) via infrared "no touch" thermometers when medical surveillance screening.

## Risk Assessment Report & COVID-19 Management Plan

As part of the 'back to work' strategy of your business, you have the responsibility to measure the risk that your employees are faced with at the workplace through a HIRA (hazard identification risk assessment). Once that is done, you must ensure a plan is implemented to manage the COVID-19 risk. We can help you with a risk assessment that will analyze your business needs and guide you on how employees can operate at work or at home; space employees apart to practice correct social distancing; implement shifts and sectorizing of your business so that if a person is infected a small % of the business will only be shut down.

## 24-HR Call Centre: Doctor telephonic Advice/Counselling

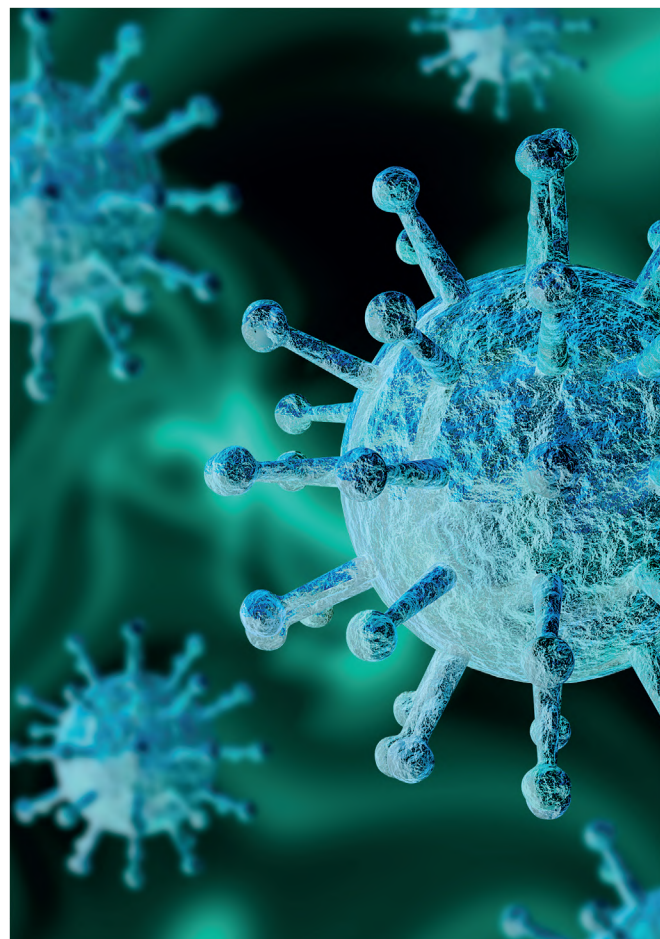
We can set up a COVID-19 toll-free support line, that operates 24 hours a day, seven days a week, and 365 days a year. The tollfree support line is fully staffed with multilingual registered professionals who provide first line assistance, support and counselling. We guarantee that all calls are answered by trained and qualified professionals at all times. Airtime is not needed to contact our Care Centre, help is accessible via free USSD request, WhatsApp, by sending a please call me and through email.

## Workplace COVID-19 e-learning course

An online course that aims to educate company employees around facts relating to COVID-19. The course includes content videos, essential information about the virus, how to protect yourself, contact details for the Emergency Hotline, and two separate quizzes: one on the above information and one on the COVID-19 workplace protocols. All results will be analysed and communicated to the respective business owners or identified administrators, providing clear and accurate feedback regarding their employee's knowledge of the COVID-19 pandemic, and their dedication to preventing the spread of the virus.

## Recruitment - Field Healthcare Workers

Our expertise lies in the management and coordination of healthcare professional recruitment. We offer a complete range of specialist staffing solutions of healthcare workers that can be trained and deployed in urban, rural and peri-urban communities to deal with your COVID-19 concerns.



**FOR MORE INFORMATION CONTACT:**

**+27 10 110 8832**

**matsi@furaha.co.za**

**www.furahasolutions.co.za**

